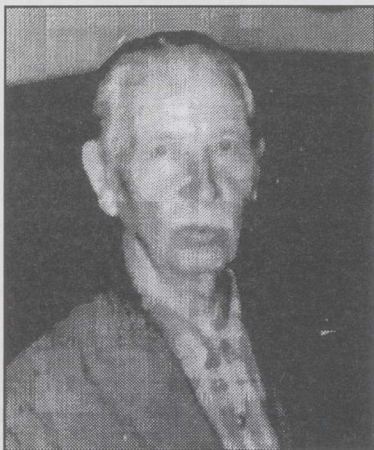


<https://doi.org/10.3176/oil.1997.4.08>

IN MEMORIAM

TO THE MEMORY OF ESTONIAN MINING ENGINEER KARL FELDWEBER



Karl August Feldweber was born on the 4th of December, 1897, in Valgamaa in the family of a farmer. In 1915, he entered Petrograd Mining Institute but he could not graduate because of big commotions in Russia. In 1920-1922, he studied in the Royal Technical College in Glasgow and in the Glasgow University, from which he graduated as a Bachelor of Science in Mining Engineering in November, 1922. In 1922-1934, he was employed as Mine Superintendent by the first Estonian Oil Shale Company in Kukruse. In 1934-

1937 and 1938-1940 he held several posts in Tallinn. In 1937-1938, he designed a mine near Kohtla for New Consolidated Gold Fields Ltd. Estonian Branch, being employed there as Chief of Mining Department. In July 1937, he was appointed by the President of the Estonian Republic a member of the Natural Resources Institute.

In 1940, he was appointed Technical Director of the oil-shale plant in Kiviõli. In 1941-1944, he was Chief of Geological Investigation Department of Industrial Research Institute in Tallinn. In 1944, he left Estonia and settled in the U.S.A. in California where he qualified as a highway engineer under the new name of Karl Tanner. Karl Feldweber-Tanner died on the 14th of November, 1983.

Though K Feldweber did not reach the scientific standards of the best-known mining specialists like Jaan Kark and Artur Linholm-Linari in pre-war Estonia, he was erudite enough to lecture a course on mining economy at Tallinn Technical University in 1941-1944. In this way he was our first lecturer on this particular specialty.

Enno REINSALU